

Safe use of products containing diisocyanates

BOLL

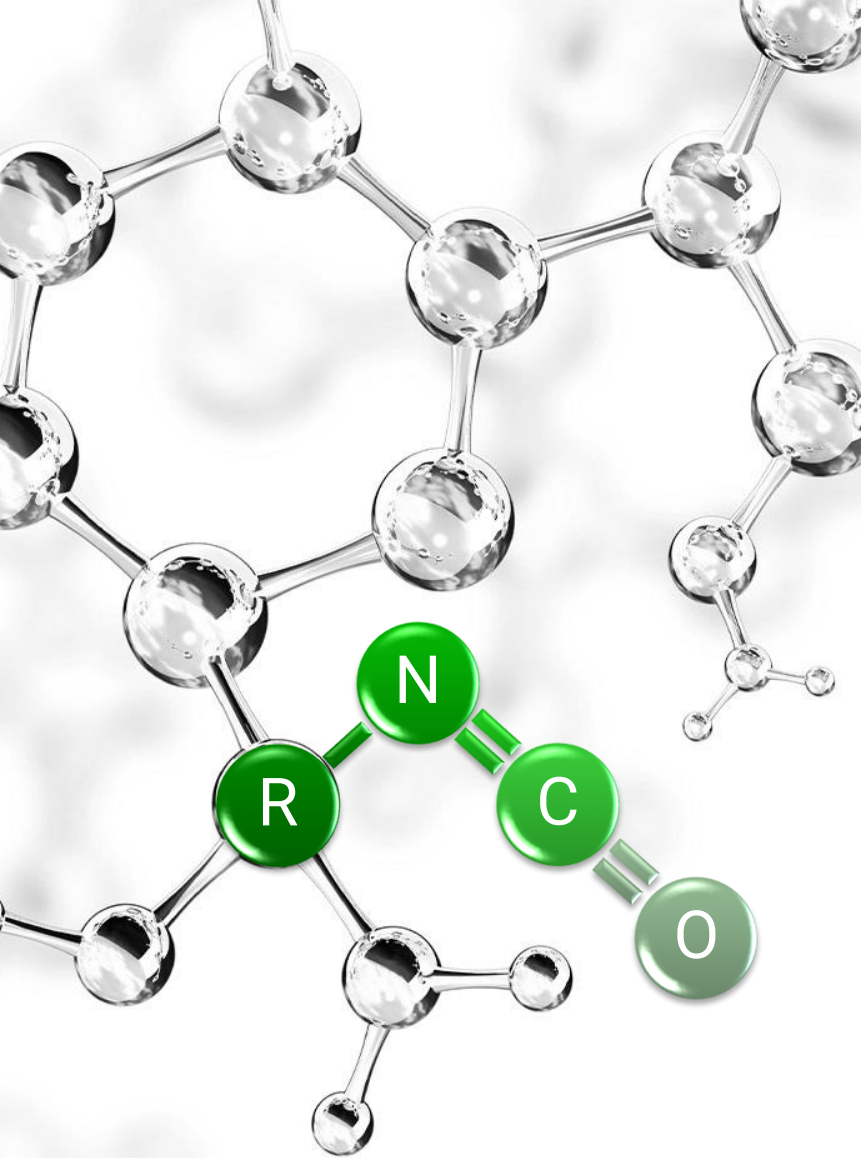
Let's WIN together.

In connection with the European Commission's Regulation 2020/1449, amending Annex XVII of the REACH Regulation, new requirements have been introduced for the use of diisocyanates in industrial and professional contexts.

It is important to note that, after August 24, 2023, diisocyanates cannot be used alone, as components of other substances, or in mixtures for industrial and professional applications unless:

- The concentration of diisocyanates, individually and in combination, is less than 0.1% by weight, or
- The employer or self-employed person ensures that industrial or professional users complete training on the safe use of diisocyanates before handling these substances or mixtures.





What are diisocyanates?

- Diisocyanates are chemical compounds containing at least two isocyanate groups (-NCO). They are widely used in industry, particularly in the production of polyurethanes. Their reactivity allows for the creation of durable and flexible materials, but due to their toxicity, they have to be handled carefully.
- Diisocyanates are important industrial compounds, but they can pose health risks if not used in accordance with safety regulations.

Among BOLL products, diisocyanates are present in:

- Polyurethane adhesive sealants 310 ml, 600 ml,
- Windscreen adhesive 310 ml,
- Windscreen adhesive SPRINT 310 ml, 600 ml,
- Glass primer 15ml, 30 ml, 250 ml, 1 l,
- Hardeners for two-component clear coats
- Hardener for two-component primer filler



Where can you find information about the presence of diisocyanates in a product?

- On the product label:



SECTION 1: IDENTIFICATION OF THE SUBSTANCE/MIXTURE AND OF THE SUPPLIER/UNDER-TAKING

1.1 **Product identifier:** LAKIER BEZBARWNY HS 2:1 - CLEARCOAT 2:1 HS
Other names of identification:
LIFE: 8099-11WG-V001-1A4Y

1.2 **Relevant identified uses of the substance or mixture and uses advised against:**
Relevant uses: Car refinishing - Clearcoats
Uses advised against: All uses not specified in this section or in section 7.3

1.3 **Details of the supplier of the safety data sheet:**
BOLL Węgrzech Dalszoki Spółka z ograniczoną odpowiedzialnością
65 713 Zielona Góra - Polska
Phone: 48 611 99 99 - Fax: 48 611 99 00
hazards@boll.pl
https://www.boll.pl

1.4 **Emergency telephone number:**

SECTION 2: HAZARDS IDENTIFICATION**

2.1 **Classification of the substance or mixture:**
CLP Regulation (EC) No 1272/2008:
Classification of this product has been carried out in accordance with CLP Regulation (EC) No. 1272/2008:
Aquatic Chronic 3: Hazardous to the aquatic environment, long-term hazard, Category 3, H412
Eye Irrit. 2: Eye irritation, Category 2, H319
Flam. Liq. 3: Flammable liquid, Category 3, H226
Skin Irrit. 2: Skin irritation, Category 2, H315
STOT RE 2: Specific target organ toxicity - repeated exposure, Hazard Category 2, H373
STOT SE 3: Respiratory tract toxicity, single exposure, Category 3, H335

2.2 **Label elements:**
CLP Regulation (EC) No 1272/2008:
Warning
GHS07, GHS09, GHS11, GHS12, GHS13, GHS14, GHS15, GHS16, GHS17, GHS18, GHS19, GHS20, GHS21, GHS22, GHS23, GHS24, GHS25, GHS26, GHS27, GHS28, GHS29, GHS30, GHS31, GHS32, GHS33, GHS34, GHS35, GHS36, GHS37, GHS38, GHS39, GHS40, GHS41, GHS42, GHS43, GHS44, GHS45, GHS46, GHS47, GHS48, GHS49, GHS50, GHS51, GHS52, GHS53, GHS54, GHS55, GHS56, GHS57, GHS58, GHS59, GHS60, GHS61, GHS62, GHS63, GHS64, GHS65, GHS66, GHS67, GHS68, GHS69, GHS70, GHS71, GHS72, GHS73, GHS74, GHS75, GHS76, GHS77, GHS78, GHS79, GHS80, GHS81, GHS82, GHS83, GHS84, GHS85, GHS86, GHS87, GHS88, GHS89, GHS90, GHS91, GHS92, GHS93, GHS94, GHS95, GHS96, GHS97, GHS98, GHS99, GHS100, GHS101, GHS102, GHS103, GHS104, GHS105, GHS106, GHS107, GHS108, GHS109, GHS110, GHS111, GHS112, GHS113, GHS114, GHS115, GHS116, GHS117, GHS118, GHS119, GHS120, GHS121, GHS122, GHS123, GHS124, GHS125, GHS126, GHS127, GHS128, GHS129, GHS130, GHS131, GHS132, GHS133, GHS134, GHS135, GHS136, GHS137, GHS138, GHS139, GHS140, GHS141, GHS142, GHS143, GHS144, GHS145, GHS146, GHS147, GHS148, GHS149, GHS150, GHS151, GHS152, GHS153, GHS154, GHS155, GHS156, GHS157, GHS158, GHS159, GHS160, GHS161, GHS162, GHS163, GHS164, GHS165, GHS166, GHS167, GHS168, GHS169, GHS170, GHS171, GHS172, GHS173, GHS174, GHS175, GHS176, GHS177, GHS178, GHS179, GHS180, GHS181, GHS182, GHS183, GHS184, GHS185, GHS186, GHS187, GHS188, GHS189, GHS190, GHS191, GHS192, GHS193, GHS194, GHS195, GHS196, GHS197, GHS198, GHS199, GHS200, GHS201, GHS202, GHS203, GHS204, GHS205, GHS206, GHS207, GHS208, GHS209, GHS210, GHS211, GHS212, GHS213, GHS214, GHS215, GHS216, GHS217, GHS218, GHS219, GHS220, GHS221, GHS222, GHS223, GHS224, GHS225, GHS226, GHS227, GHS228, GHS229, GHS230, GHS231, GHS232, GHS233, GHS234, GHS235, GHS236, GHS237, GHS238, GHS239, GHS240, GHS241, GHS242, GHS243, GHS244, GHS245, GHS246, GHS247, GHS248, GHS249, GHS250, GHS251, GHS252, GHS253, GHS254, GHS255, GHS256, GHS257, GHS258, GHS259, GHS260, GHS261, GHS262, GHS263, GHS264, GHS265, GHS266, GHS267, GHS268, GHS269, GHS270, GHS271, GHS272, GHS273, GHS274, GHS275, GHS276, GHS277, GHS278, GHS279, GHS280, GHS281, GHS282, GHS283, GHS284, GHS285, GHS286, GHS287, GHS288, GHS289, GHS290, GHS291, GHS292, GHS293, GHS294, GHS295, GHS296, GHS297, GHS298, GHS299, GHS300, GHS301, GHS302, GHS303, GHS304, GHS305, GHS306, GHS307, GHS308, GHS309, GHS310, GHS311, GHS312, GHS313, GHS314, GHS315, GHS316, GHS317, GHS318, GHS319, GHS320, GHS321, GHS322, GHS323, GHS324, GHS325, GHS326, GHS327, GHS328, GHS329, GHS330, GHS331, GHS332, GHS333, GHS334, GHS335, GHS336, GHS337, GHS338, GHS339, GHS340, GHS341, GHS342, GHS343, GHS344, GHS345, GHS346, GHS347, GHS348, GHS349, GHS350, GHS351, GHS352, GHS353, GHS354, GHS355, GHS356, GHS357, GHS358, GHS359, GHS360, GHS361, GHS362, GHS363, GHS364, GHS365, GHS366, GHS367, GHS368, GHS369, GHS370, GHS371, GHS372, GHS373, GHS374, GHS375, GHS376, GHS377, GHS378, GHS379, GHS380, GHS381, GHS382, GHS383, GHS384, GHS385, GHS386, GHS387, GHS388, GHS389, GHS390, GHS391, GHS392, GHS393, GHS394, GHS395, GHS396, GHS397, GHS398, GHS399, GHS400, GHS401, GHS402, GHS403, GHS404, GHS405, GHS406, GHS407, GHS408, GHS409, GHS410, GHS411, GHS412, GHS413, GHS414, GHS415, GHS416, GHS417, GHS418, GHS419, GHS420, GHS421, GHS422, GHS423, GHS424, GHS425, GHS426, GHS427, GHS428, GHS429, GHS430, GHS431, GHS432, GHS433, GHS434, GHS435, GHS436, GHS437, GHS438, GHS439, GHS440, GHS441, GHS442, GHS443, GHS444, GHS445, GHS446, GHS447, GHS448, GHS449, GHS450, GHS451, GHS452, GHS453, GHS454, GHS455, GHS456, GHS457, GHS458, GHS459, GHS460, GHS461, GHS462, GHS463, GHS464, GHS465, GHS466, GHS467, GHS468, GHS469, GHS470, GHS471, GHS472, GHS473, GHS474, GHS475, GHS476, GHS477, GHS478, GHS479, GHS480, GHS481, GHS482, GHS483, GHS484, GHS485, GHS486, GHS487, GHS488, GHS489, GHS490, GHS491, GHS492, GHS493, GHS494, GHS495, GHS496, GHS497, GHS498, GHS499, GHS500, GHS501, GHS502, GHS503, GHS504, GHS505, GHS506, GHS507, GHS508, GHS509, GHS510, GHS511, GHS512, GHS513, GHS514, GHS515, GHS516, GHS517, GHS518, GHS519, GHS520, GHS521, GHS522, GHS523, GHS524, GHS525, GHS526, GHS527, GHS528, GHS529, GHS530, GHS531, GHS532, GHS533, GHS534, GHS535, GHS536, GHS537, GHS538, GHS539, GHS540, GHS541, GHS542, GHS543, GHS544, GHS545, GHS546, GHS547, GHS548, GHS549, GHS550, GHS551, GHS552, GHS553, GHS554, GHS555, GHS556, GHS557, GHS558, GHS559, GHS560, GHS561, GHS562, GHS563, GHS564, GHS565, GHS566, GHS567, GHS568, GHS569, GHS570, GHS571, GHS572, GHS573, GHS574, GHS575, GHS576, GHS577, GHS578, GHS579, GHS580, GHS581, GHS582, GHS583, GHS584, GHS585, GHS586, GHS587, GHS588, GHS589, GHS590, GHS591, GHS592, GHS593, GHS594, GHS595, GHS596, GHS597, GHS598, GHS599, GHS600, GHS601, GHS602, GHS603, GHS604, GHS605, GHS606, GHS607, GHS608, GHS609, GHS610, GHS611, GHS612, GHS613, GHS614, GHS615, GHS616, GHS617, GHS618, GHS619, GHS620, GHS621, GHS622, GHS623, GHS624, GHS625, GHS626, GHS627, GHS628, GHS629, GHS630, GHS631, GHS632, GHS633, GHS634, GHS635, GHS636, GHS637, GHS638, GHS639, GHS640, GHS641, GHS642, GHS643, GHS644, GHS645, GHS646, GHS647, GHS648, GHS649, GHS650, GHS651, GHS652, GHS653, GHS654, GHS655, GHS656, GHS657, GHS658, GHS659, GHS660, GHS661, GHS662, GHS663, GHS664, GHS665, GHS666, GHS667, GHS668, GHS669, GHS670, GHS671, GHS672, GHS673, GHS674, GHS675, GHS676, GHS677, GHS678, GHS679, GHS680, GHS681, GHS682, GHS683, GHS684, GHS685, GHS686, GHS687, GHS688, GHS689, GHS690, GHS691, GHS692, GHS693, GHS694, GHS695, GHS696, GHS697, GHS698, GHS699, GHS700, GHS701, GHS702, GHS703, GHS704, GHS705, GHS706, GHS707, GHS708, GHS709, GHS710, GHS711, GHS712, GHS713, GHS714, GHS715, GHS716, GHS717, GHS718, GHS719, GHS720, GHS721, GHS722, GHS723, GHS724, GHS725, GHS726, GHS727, GHS728, GHS729, GHS730, GHS731, GHS732, GHS733, GHS734, GHS735, GHS736, GHS737, GHS738, GHS739, GHS740, GHS741, GHS742, GHS743, GHS744, GHS745, GHS746, GHS747, GHS748, GHS749, GHS750, GHS751, GHS752, GHS753, GHS754, GHS755, GHS756, GHS757, GHS758, GHS759, GHS760, GHS761, GHS762, GHS763, GHS764, GHS765, GHS766, GHS767, GHS768, GHS769, GHS770, GHS771, GHS772, GHS773, GHS774, GHS775, GHS776, GHS777, GHS778, GHS779, GHS780, GHS781, GHS782, GHS783, GHS784, GHS785, GHS786, GHS787, GHS788, GHS789, GHS790, GHS791, GHS792, GHS793, GHS794, GHS795, GHS796, GHS797, GHS798, GHS799, GHS800, GHS801, GHS802, GHS803, GHS804, GHS805, GHS806, GHS807, GHS808, GHS809, GHS810, GHS811, GHS812, GHS813, GHS814, GHS815, GHS816, GHS817, GHS818, GHS819, GHS820, GHS821, GHS822, GHS823, GHS824, GHS825, GHS826, GHS827, GHS828, GHS829, GHS830, GHS831, GHS832, GHS833, GHS834, GHS835, GHS836, GHS837, GHS838, GHS839, GHS840, GHS841, GHS842, GHS843, GHS844, GHS845, GHS846, GHS847, GHS848, GHS849, GHS850, GHS851, GHS852, GHS853, GHS854, GHS855, GHS856, GHS857, GHS858, GHS859, GHS860, GHS861, GHS862, GHS863, GHS864, GHS865, GHS866, GHS867, GHS868, GHS869, GHS870, GHS871, GHS872, GHS873, GHS874, GHS875, GHS876, GHS877, GHS878, GHS879, GHS880, GHS881, GHS882, GHS883, GHS884, GHS885, GHS886, GHS887, GHS888, GHS889, GHS890, GHS891, GHS892, GHS893, GHS894, GHS895, GHS896, GHS897, GHS898, GHS899, GHS900, GHS901, GHS902, GHS903, GHS904, GHS905, GHS906, GHS907, GHS908, GHS909, GHS910, GHS911, GHS912, GHS913, GHS914, GHS915, GHS916, GHS917, GHS918, GHS919, GHS920, GHS921, GHS922, GHS923, GHS924, GHS925, GHS926, GHS927, GHS928, GHS929, GHS930, GHS931, GHS932, GHS933, GHS934, GHS935, GHS936, GHS937, GHS938, GHS939, GHS940, GHS941, GHS942, GHS943, GHS944, GHS945, GHS946, GHS947, GHS948, GHS949, GHS950, GHS951, GHS952, GHS953, GHS954, GHS955, GHS956, GHS957, GHS958, GHS959, GHS960, GHS961, GHS962, GHS963, GHS964, GHS965, GHS966, GHS967, GHS968, GHS969, GHS970, GHS971, GHS972, GHS973, GHS974, GHS975, GHS976, GHS977, GHS978, GHS979, GHS980, GHS981, GHS982, GHS983, GHS984, GHS985, GHS986, GHS987, GHS988, GHS989, GHS990, GHS991, GHS992, GHS993, GHS994, GHS995, GHS996, GHS997, GHS998, GHS999, GHS1000, GHS1001, GHS1002, GHS1003, GHS1004, GHS1005, GHS1006, GHS1007, GHS1008, GHS1009, GHS1010, GHS1011, GHS1012, GHS1013, GHS1014, GHS1015, GHS1016, GHS1017, GHS1018, GHS1019, GHS1020, GHS1021, GHS1022, GHS1023, GHS1024, GHS1025, GHS1026, GHS1027, GHS1028, GHS1029, GHS1030, GHS1031, GHS1032, GHS1033, GHS1034, GHS1035, GHS1036, GHS1037, GHS1038, GHS1039, GHS1040, GHS1041, GHS1042, GHS1043, GHS1044, GHS1045, GHS1046, GHS1047, GHS1048, GHS1049, GHS1050, GHS1051, GHS1052, GHS1053, GHS1054, GHS1055, GHS1056, GHS1057, GHS1058, GHS1059, GHS1060, GHS1061, GHS1062, GHS1063, GHS1064, GHS1065, GHS1066, GHS1067, GHS1068, GHS1069, GHS1070, GHS1071, GHS1072, GHS1073, GHS1074, GHS1075, GHS1076, GHS1077, GHS1078, GHS1079, GHS1080, GHS1081, GHS1082, GHS1083, GHS1084, GHS1085, GHS1086, GHS1087, GHS1088, GHS1089, GHS1090, GHS1091, GHS1092, GHS1093, GHS1094, GHS1095, GHS1096, GHS1097, GHS1098, GHS1099, GHS1100, GHS1101, GHS1102, GHS1103, GHS1104, GHS1105, GHS1106, GHS1107, GHS1108, GHS1109, GHS1110, GHS1111, GHS1112, GHS1113, GHS1114, GHS1115, GHS1116, GHS1117, GHS1118, GHS1119, GHS1120, GHS1121, GHS1122, GHS1123, GHS1124, GHS1125, GHS1126, GHS1127, GHS1128, GHS1129, GHS1130, GHS1131, GHS1132, GHS1133, GHS1134, GHS1135, GHS1136, GHS1137, GHS1138, GHS1139, GHS1140, GHS1141, GHS1142, GHS1143, GHS1144, GHS1145, GHS1146, GHS1147, GHS1148, GHS1149, GHS1150, GHS1151, GHS1152, GHS1153, GHS1154, GHS1155, GHS1156, GHS1157, GHS1158, GHS1159, GHS1160, GHS1161, GHS1162, GHS1163, GHS1164, GHS1165, GHS1166, GHS1167, GHS1168, GHS1169, GHS1170, GHS1171, GHS1172, GHS1173, GHS1174, GHS1175, GHS1176, GHS1177, GHS1178, GHS1179, GHS1180, GHS1181, GHS1182, GHS1183, GHS1184, GHS1185, GHS1186, GHS1187, GHS1188, GHS1189, GHS1190, GHS1191, GHS1192, GHS1193, GHS1194, GHS1195, GHS1196, GHS1197, GHS1198, GHS1199, GHS1200, GHS1201, GHS1202, GHS1203, GHS1204, GHS1205, GHS1206, GHS1207, GHS1208, GHS1209, GHS1210, GHS1211, GHS1212, GHS1213, GHS1214, GHS1215, GHS1216, GHS1217, GHS1218, GHS1219, GHS1220, GHS1221, GHS1222, GHS1223, GHS1224, GHS1225, GHS1226, GHS1227, GHS1228, GHS1229, GHS1230, GHS1231, GHS1232, GHS1233, GHS1234, GHS1235, GHS1236, GHS1237, GHS1238, GHS1239, GHS1240, GHS1241, GHS1242, GHS1243, GHS1244, GHS1245, GHS1246, GHS1247, GHS1248, GHS1249, GHS1250, GHS1251, GHS1252, GHS1253, GHS1254, GHS1255, GHS1256, GHS1257, GHS1258, GHS1259, GHS1260, GHS1261, GHS1262, GHS1263, GHS1264, GHS1265, GHS1266, GHS1267, GHS1268, GHS1269, GHS1270, GHS1271, GHS1272, GHS1273, GHS1274, GHS1275, GHS1276, GHS1277, GHS1278, GHS1279, GHS1280, GHS1281, GHS1282, GHS1283, GHS1284, GHS1285, GHS1286, GHS1287, GHS1288, GHS1289, GHS1290, GHS1291, GHS1292, GHS1293, GHS1294, GHS1295, GHS1296, GHS1297, GHS1298, GHS1299, GHS1300, GHS1301, GHS1302, GHS1303, GHS1304, GHS1305, GHS1306, GHS1307, GHS1308, GHS1309, GHS1310, GHS1311, GHS1312, GHS1313, GHS1314, GHS1315, GHS1316, GHS1317, GHS1318, GHS1319, GHS1320, GHS1321, GHS1322, GHS1323, GHS1324, GHS1325, GHS1326, GHS1327, GHS1328, GHS1329, GHS1330, GHS1331, GHS1332, GHS1333, GHS1334, GHS1335, GHS1336, GHS1337, GHS1338, GHS1339, GHS1340, GHS1341, GHS1342, GHS1343, GHS1344, GHS1345, GHS1346, GHS1347, GHS1348, GHS1349, GHS1350, GHS1351, GHS1352, GHS1353, GHS1354, GHS1355, GHS1356, GHS1357, GHS1358, GHS1359, GHS1360, GHS1361, GHS1362, GHS1363, GHS1364, GHS1365, GHS1366, GHS1367, GHS1368, GHS1369, GHS1370, GHS1371, GHS1372, GHS1373, GHS1374, GHS1375, GHS1376, GHS1377, GHS1378, GHS1379, GHS1380, GHS1381, GHS1382, GHS1383, GHS1384, GHS1385, GHS1386, GHS1387, GHS1388, GHS1389, GHS1390, GHS1391, GHS1392, GHS1393, GHS1394, GHS1395, GHS1396, GHS1397, GHS1398, GHS1399, GHS1400, GHS1401, GHS1402, GHS1403, GHS1404, GHS1405, GHS1406, GHS1407, GHS1408, GHS1409, GHS1410, GHS1411, GHS1412, GHS1413, GHS1414, GHS1415, GHS1416, GHS1417, GHS1418, GHS1419, GHS1420, GHS1421, GHS1422, GHS1423, GHS1424, GHS1425, GHS1426, GHS1427, GHS1428, GHS1429, GHS1430, GHS1431, GHS1432, GHS1433, GHS1434, GHS1435, GHS1436, GHS1437, GHS1438, GHS1439, GHS1440, GHS1441, GHS1442, GHS1443, GHS1444, GHS1445, GHS1446, GHS1447, GHS1448, GHS1449, GHS1450, GHS1451, GHS1452, GHS1453, GHS1454, GHS1455, GHS1456, GHS1457, GHS1458, GHS1459, GHS1460, GHS1461, GHS1462, GHS1463, GHS1464, GHS1465, GHS1466, GHS1467, GHS1468, GHS1469, GHS1470, GHS1471, GHS1472, GHS1473, GHS1474, GHS1475, GHS1476, GHS1477, GHS1478, GHS1479, GHS1480, GHS1481, GHS1482, GHS1483, GHS1484, GHS1485, GHS1486, GHS1487, GHS1488, GHS1489, GHS1490, GHS1491, GHS1492, GHS1493, GHS1494, GHS1495, GHS1496, GHS1497, GHS1498, GHS1499, GHS1500, GHS1501, GHS1502, GHS1503, GHS1504, GHS1505, GHS1506, GHS1507, GHS1508, GHS1509, GHS1510, GHS1511, GHS1512, GHS1513, GHS1514, GHS1515, GHS1516, GHS1517, GHS1518, GHS1519, GHS1520, GHS1521, GHS1522, GHS1523, GHS1524, GHS1525, GHS1526, GHS1527, GHS1528, GHS1529, GHS1530, GHS1531, GHS1532, GHS1533, GHS1534, GHS1535, GHS1536, GHS1537, GHS1538, GHS1539, GHS1540, GHS1541, GHS1542, GHS1543, GHS1544, GHS1545, GHS1546, GHS1547, GHS1548, GHS1549, GHS1550, GHS1551, GHS1552, GHS1553, GHS1554, GHS1555, GHS1556, GHS1557, GHS1558, GHS1559, GHS1560, GHS1561, GHS1562, GHS1563, GHS1564, GHS1565, GHS1566, GHS1567, GHS1568, GHS1569, GHS1570, GHS1571, GHS1572, GHS1573, GHS1574, GHS1575, GHS1576, GHS1577, GHS1578, GHS1579, GHS1580, GHS1581, GHS1582, GHS1583, GHS1584, GHS1585, GHS1586, GHS1587, GHS1588, GHS1589, GHS1590, GHS1591, GHS1592, GHS1593, GHS1594, GHS1595, GHS1596, GHS1597, GHS1598, GHS1599, GHS1600, GHS1601, GHS1602, GHS1603, GHS1604, GHS1605, GHS1606, GHS1607, GHS1608, GHS1609, GHS1610, GHS1611, GHS1612, GHS1613, GHS1614, GHS1615, GHS1616, GHS1617, GHS1618, GHS1619, GHS1620, GHS1621, GHS1622, GHS1623, GHS1624, GHS1625, GHS1626, GHS1627, GHS1628, GHS1629, GHS1630, GHS1631, GHS1632, GHS1633, GHS1634, GHS1635, GHS1636, GHS1637, GHS1638, GHS1639, GHS1640, GHS1641, GHS1642, GHS1643, GHS1644, GHS1645, GHS1646, GHS1647, GHS1648, GHS1649, GHS1650, GHS1651, GHS1652, GHS1653, GHS1654, GHS1655, GHS1656, GHS1657, GHS1658, GHS1659, GHS1660, GHS1661, GHS1662, GHS1663, GHS1664, GHS1665, GHS1666, GHS1667, GHS1668, GHS1669, GHS1670, GHS1671, GHS1672, GHS1673, GHS1674, GHS1675, GHS1676, GHS1677, GHS1678, GHS1679, GHS1680, GHS1681, GHS1682, GHS1683, GHS1684, GHS1685, GHS1686, GHS1687, GHS1688, GHS1689, GHS1690, GHS1691, GHS1692, GHS1693, GHS1694, GHS1695, GHS1696, GHS1697, GHS1698, GHS1699, GHS1700, GHS1701, GHS1702, GHS1703, GHS1704, GHS1705, GHS1706, GHS1707, GHS1708, GHS1709, GHS1710, GHS1711, GHS1712, GHS1713, GHS1714, GHS1715, GHS1716, GHS1717, GHS1718, GHS1719, GHS1720, GHS1721, GHS1722, GHS1723, GHS1724, GHS1725, GHS1726, GHS1727, GHS1728, GHS1729, GHS1730, GHS1731, GHS1732, GHS1733, GHS1734, GHS1735, GHS1736, GHS1737, GHS1738, GHS1739, GHS1740, GHS1741, GHS1742, GHS1743, GHS1744, GHS1745, GHS1746, GHS1747, GHS1748, GHS1749, GHS1750, GHS1751, GHS1752, GHS1753, GHS1754, GHS1755, GHS1756, GHS1757, GHS1758, GHS1759, GHS1760, GHS1761, GHS1762, GHS1763, GHS1764, GHS1765, GHS1766, GHS1767, GHS1768, GHS1769, GHS1770, GHS1771, GHS1772, GHS1773, GHS1774, GHS1775, GHS1776, GHS1777, GHS1778, GHS1779, GHS1780, GHS1781, GHS1782, GHS1783, GHS1784, GHS1785, GHS1786, GHS1787, GHS1788, GHS1789, GHS1790, GHS1791, GHS1792, GHS1793, GHS1794, GHS1795, GHS1796, GHS1797, GHS1798, GHS1799, GHS1800, GHS1801, GHS1802, GHS1803, GHS1804, GHS1805, GHS1806, GHS1807, GHS1808, GHS1809, GHS1810, GHS1811, GHS1812, GHS1813, GHS1814, GHS1815, GHS1816, GHS1817, GHS1818, GHS1819, GHS1820, GHS1821, GHS1822, GHS1823, GHS1824, GHS1825, GHS1826, GHS1827, GHS1828, GHS18

Toxicity-Related Hazards:

- Diisocyanates can cause acute toxic reactions, such as irritation of the respiratory tract, skin, and eyes.
- Long-term exposure may lead to serious health conditions, including occupational asthma and lung damage.

Exposure to Diisocyanates:

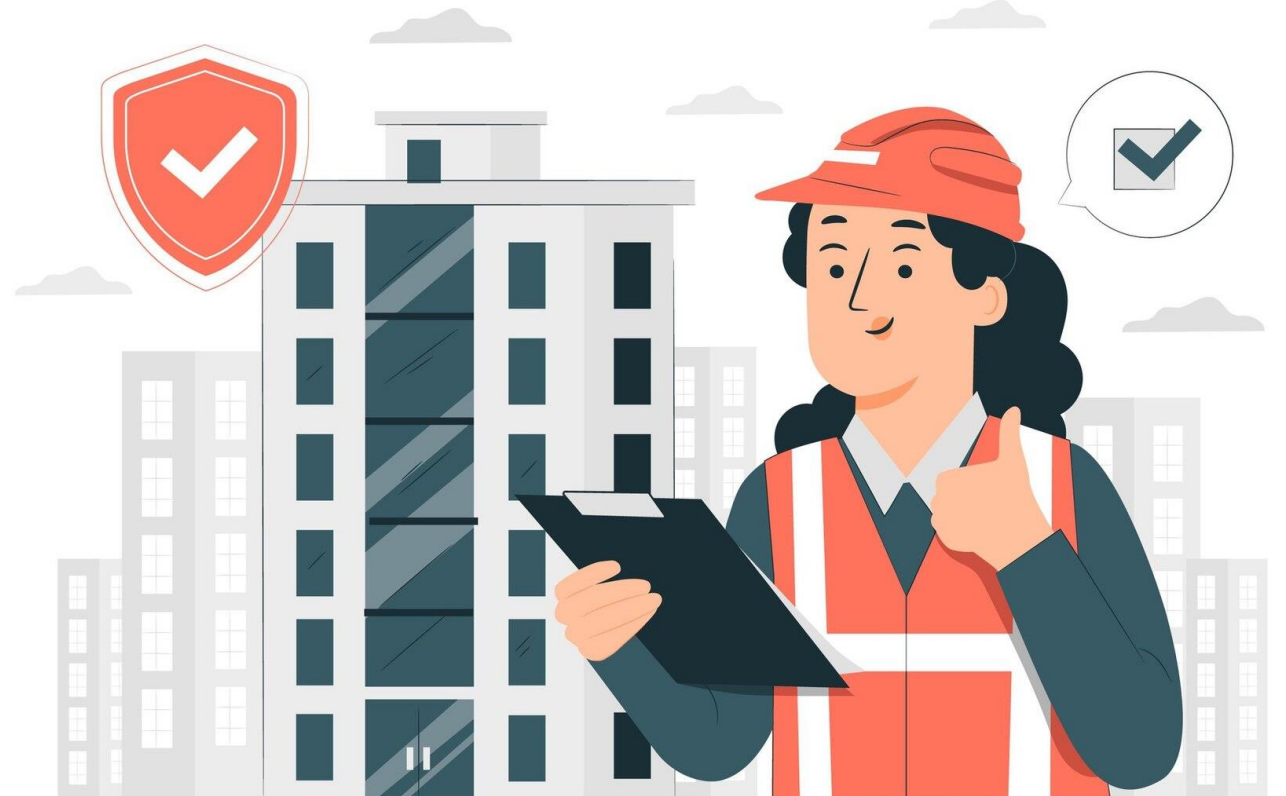
Exposure can occur through inhalation of vapors, skin contact, or ingestion (rarely). The highest risk arises during spray application or mixing of products without proper protection.



Therefore, training is essential to ensure that every worker handling diisocyanates has sufficient knowledge of the hazards and risk management measures, including the use of appropriate personal protective equipment.

Who can conduct the training?

- The training should be conducted by a health and safety specialist with qualifications obtained through appropriate professional training.
- The training must comply with the regulations of the Member State where the industrial or professional user operates.
- The employer or self-employed person is responsible for documenting the completion of training.
- The training must be repeated every five years.



Where can I find such training?



- The training is available on the website <https://safeusediisocyanates.eu/pl>
- The training has been prepared by the European Association of Isocyanate Producers (ALIPA).
- You will find an appropriate levels tailored to the products you use and the application methods.